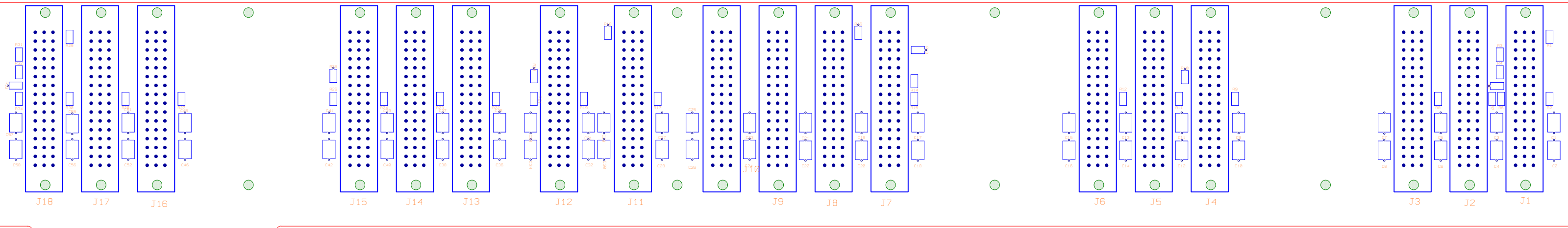


RM Position 4
Core 6
GA2 GA1 GA0
RB3 RB2 RB1

Calibration Module
Core 4
Slot 11 - Pulser Module (GA0)
Slot 12 - QIE Readout (GA1)
GA1 GA0

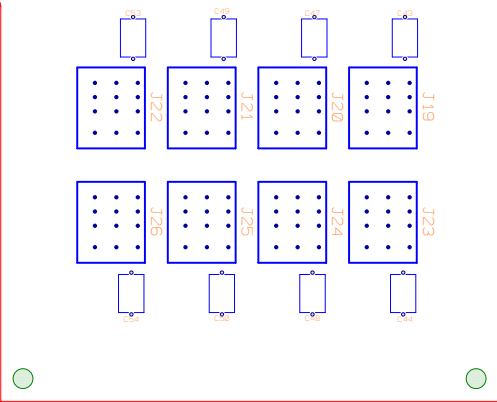
RM Position 1
Core 1
GA2 GA1 GA0
RB3 RB2 RB1



RM Position 3
Core 5
GA2 GA1 GA0
RB3 RB2 RB1

CCM Module
Slot 7 - Serial Communication
Slot 8 - Temperature
Slot 9 - Timing A
Slot 10 - Timing B

RM Position 2
Core 2
GA2 GA1 GA0
RB3 RB2 RB1



CCM Module
has the ability to address up to 6 groups of backplane cards.
These groups are referred to as cores.

GA0, GA1 and GA2 represent the Geographical Address within a CCM core group. These provide bits 4 and 5 of the serial communication address: GA0 = 0x00, GA1 = 0x10, GA2 = 0x20.

RB1, RB2 and RB3 represent the FE card position within the RM.